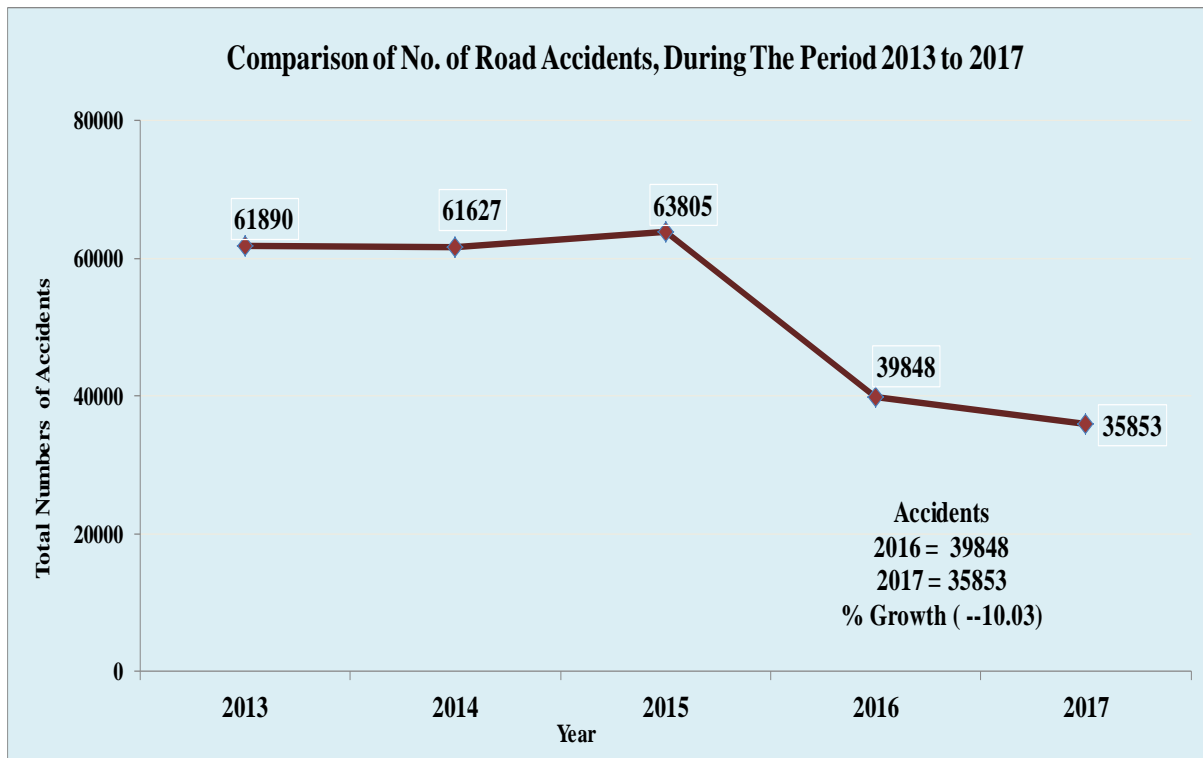
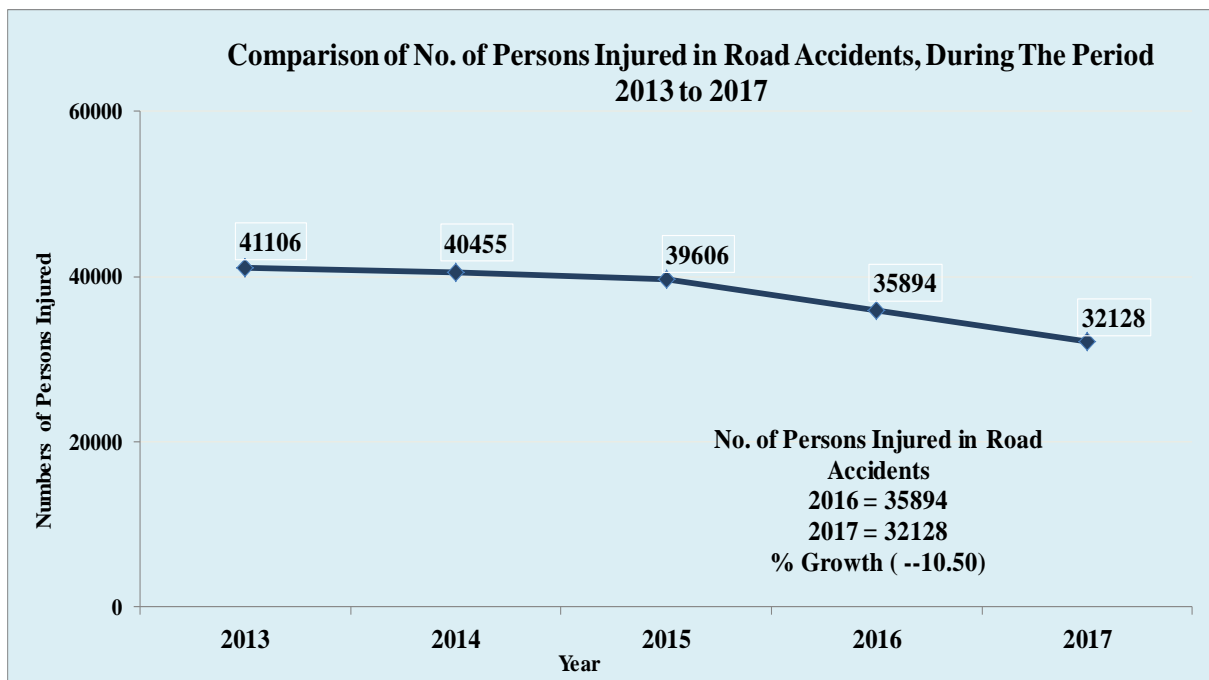
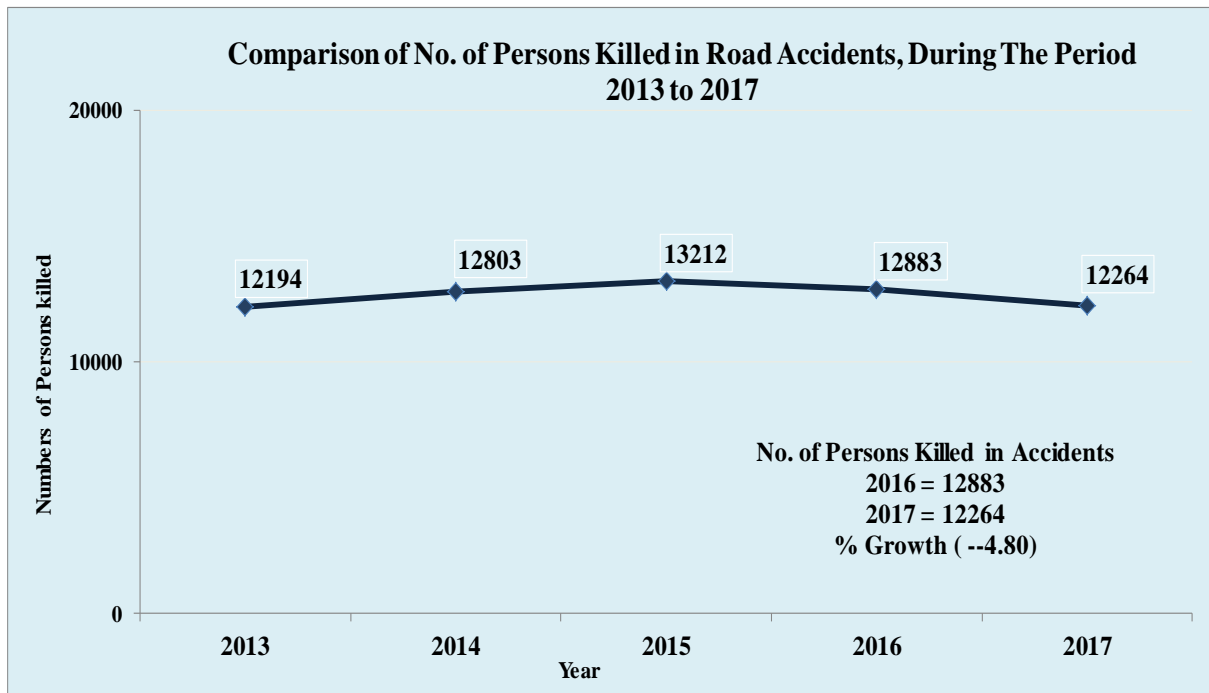


Graphical representation of Accident Profile of Maharashtra State (2013 – 2017)

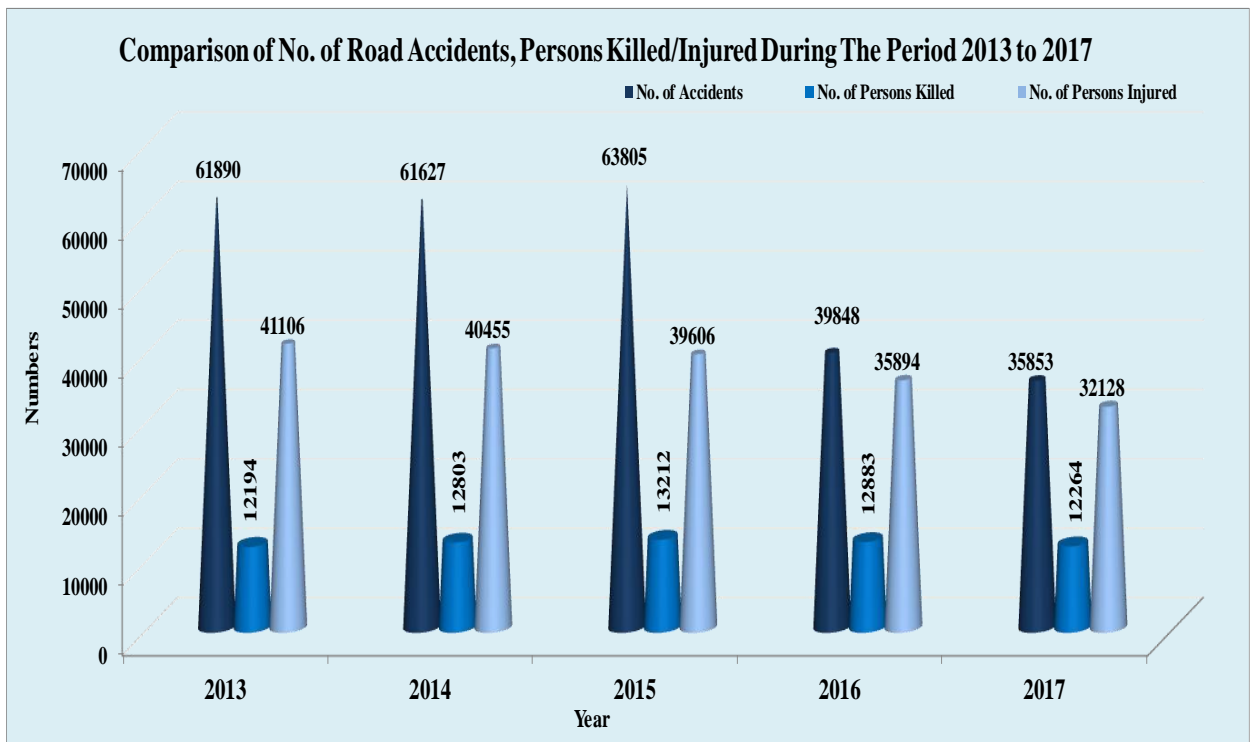


In Greater Mumbai Region “without injury Accidents” were not registered as F.I.R. in Police Station from January 2016. Hence Accident in Mumbai City & Maharashtra total Decreased over previous year.

Graphical representation of Accident Profile of Maharashtra State (2013 – 2017)

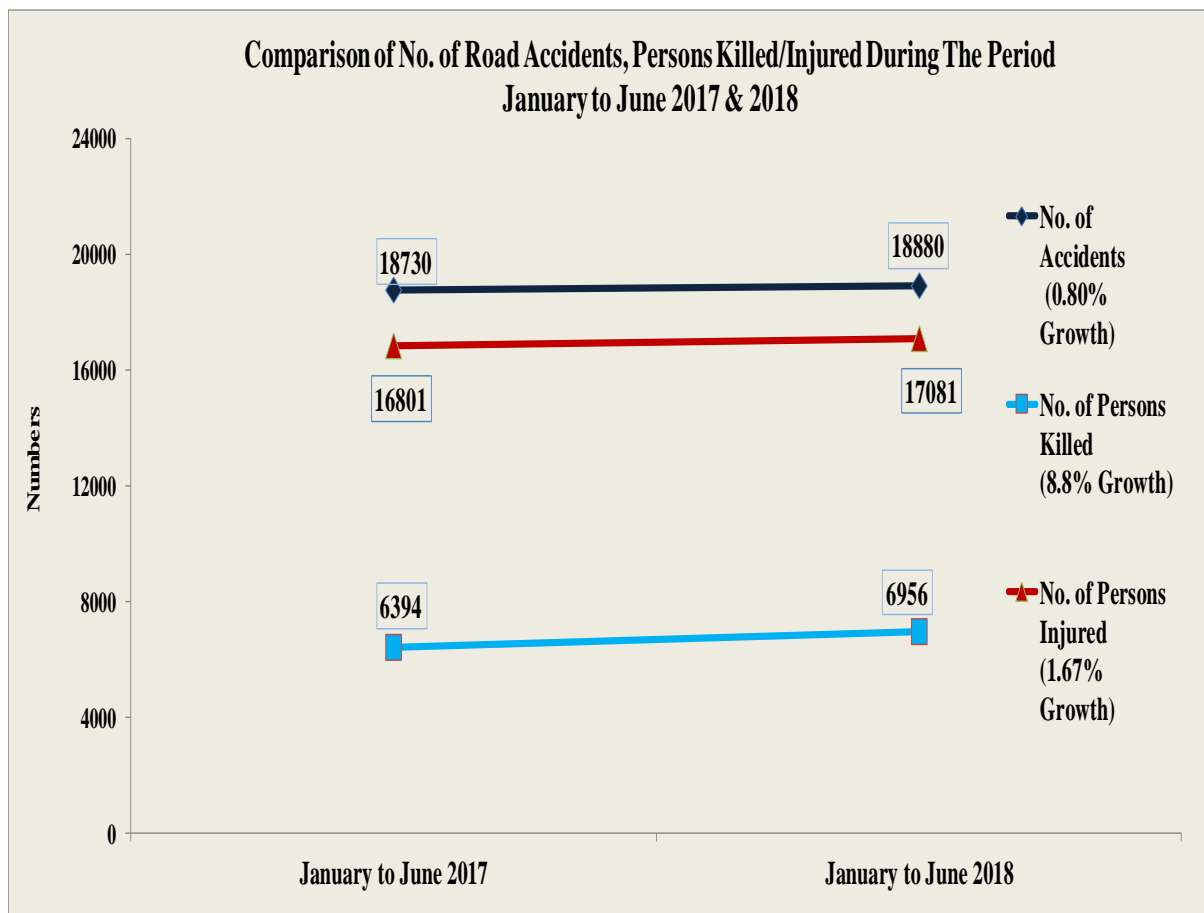


Graphical Representation of Accident Profile of Maharashtra State (2013 – 2017)



Source : Office of ADG (Highway)

Graphical Representation of Accident Profile of Maharashtra State (January to June 2017 & 2018)



Graphical Representation of Accident Profile of Maharashtra State (January to June 2017 & 2018)

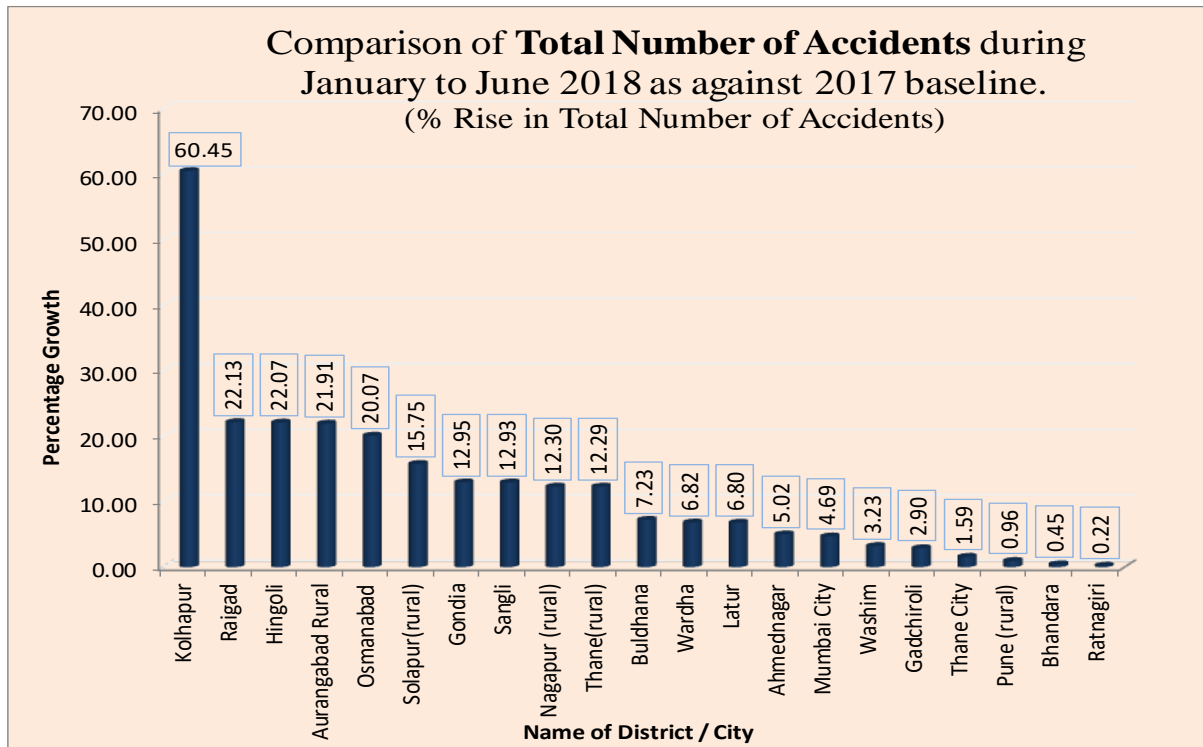


Chart A of Total Number of Accidents (+ve Growth, State 0.8% Growth)

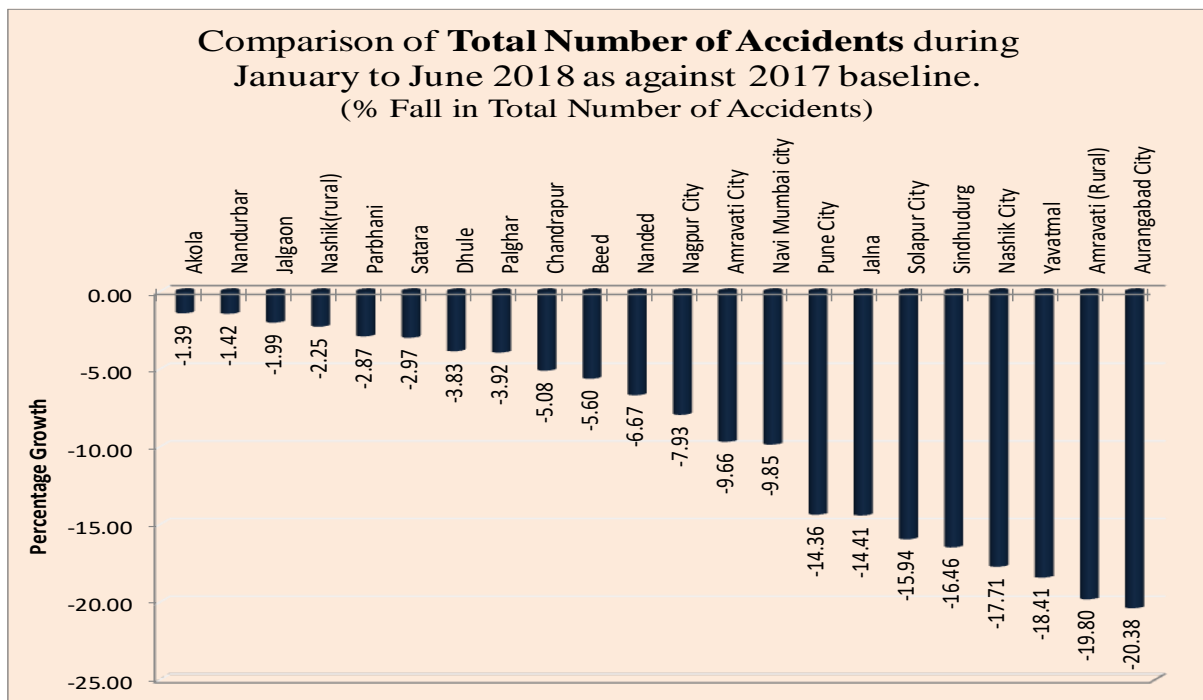


Chart B of Total Number of Accidents (--ve Growth, State 0.8% Growth)

Graphical representation of Accident Profile of Maharashtra State (January to June 2017 & 2018)

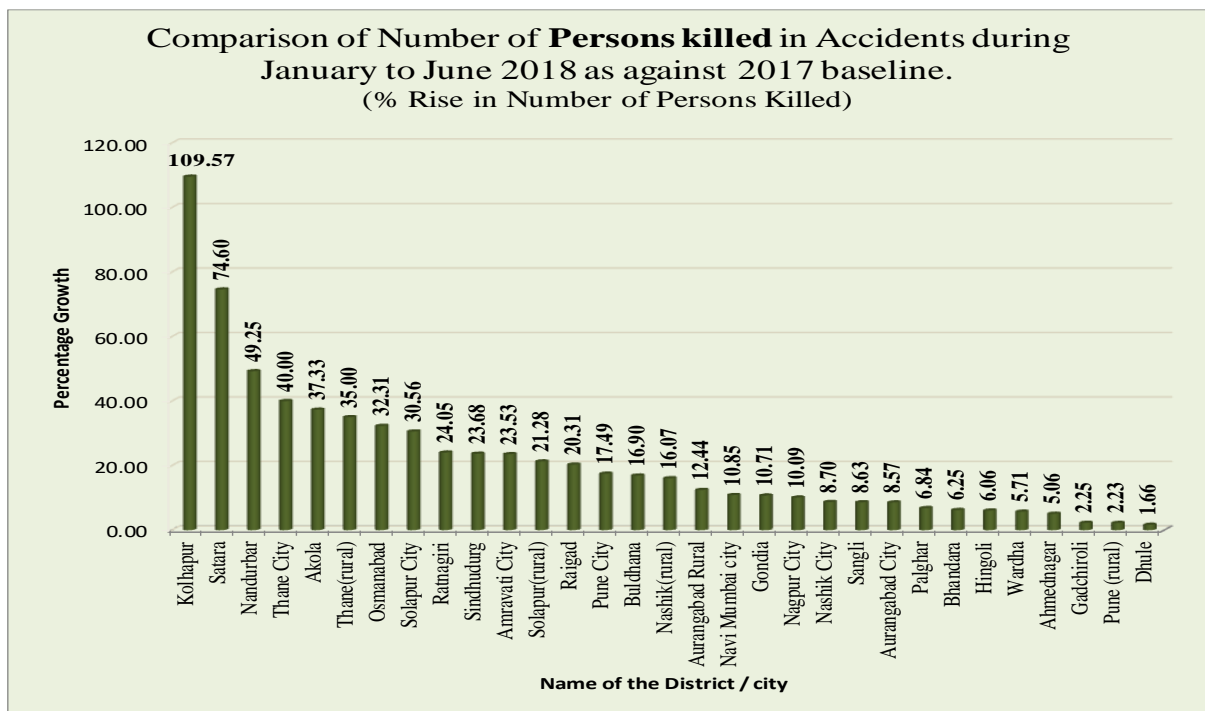


Chart A of Persons Killed in Accidents (+ve Growth, State 8.8% Growth)

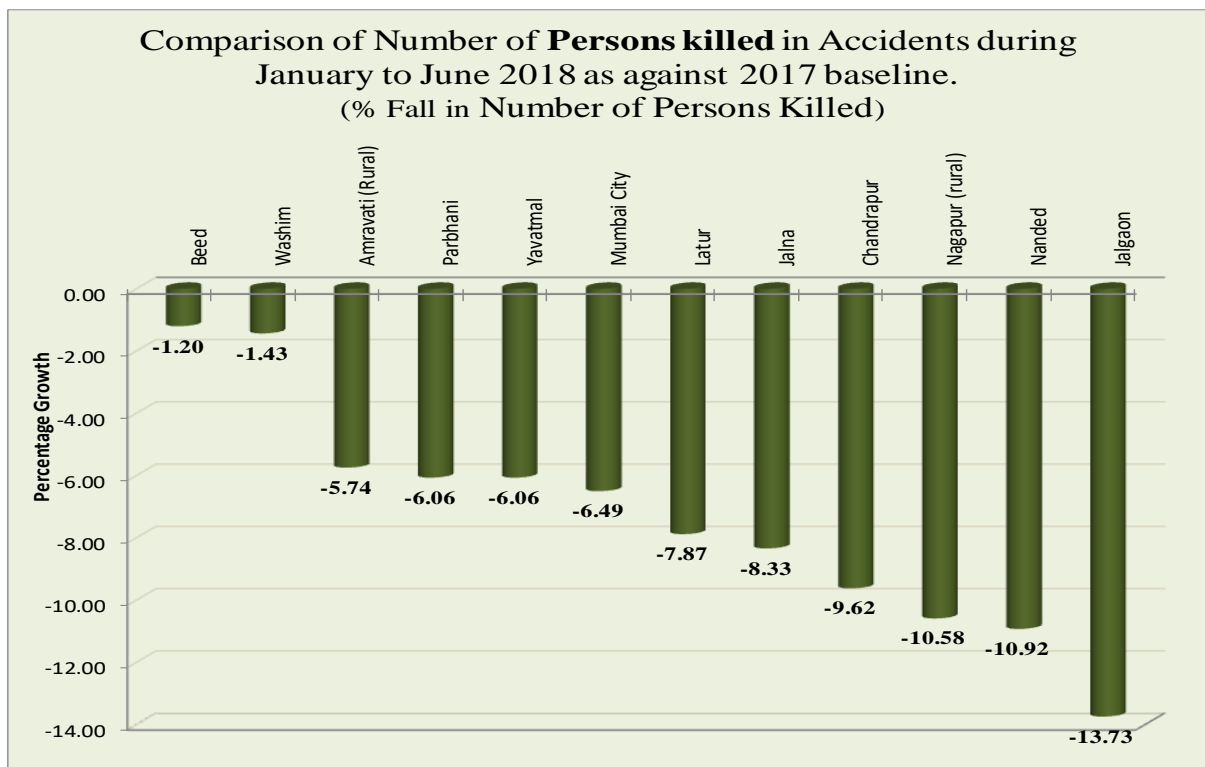


Chart B of Persons Killed in Accidents (--ve Growth, State 8.8% Growth)

Source : Office of ADG (Highway)

Graphical representation of Accident Profile of Maharashtra State (January to June 2017 & 2018)

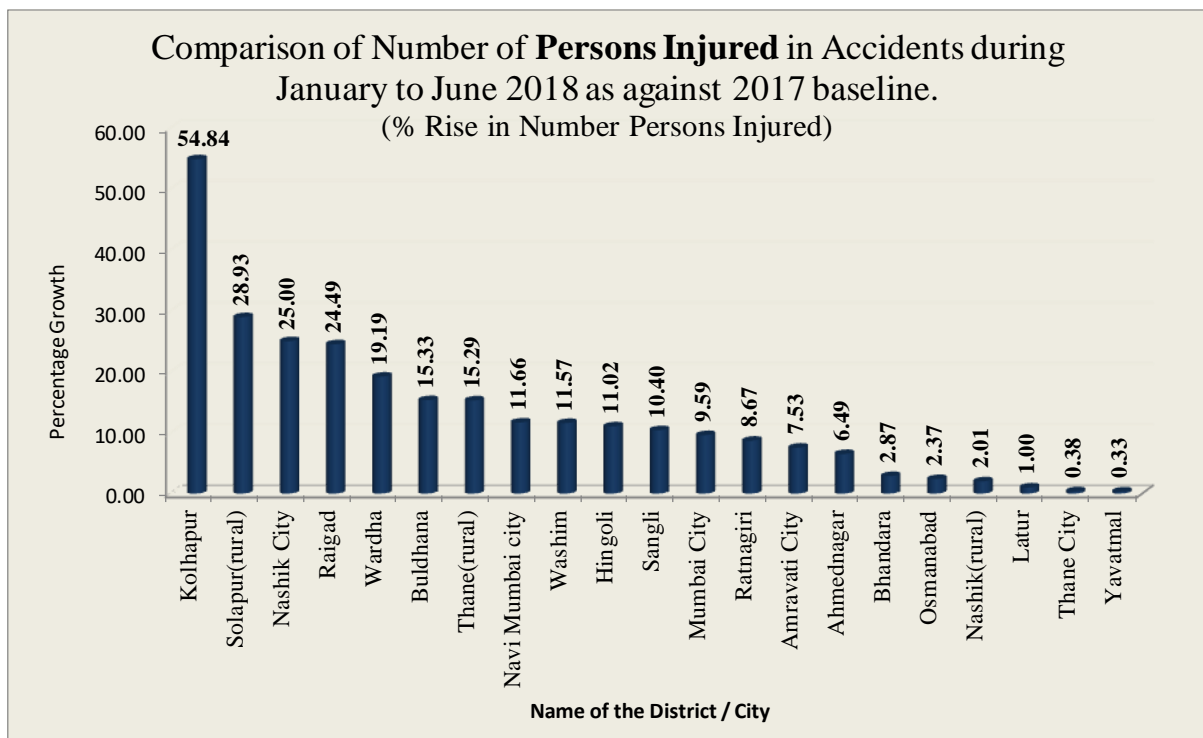


Chart A of Persons Injured in Accidents (+ve Growth, State 1.67% Growth)

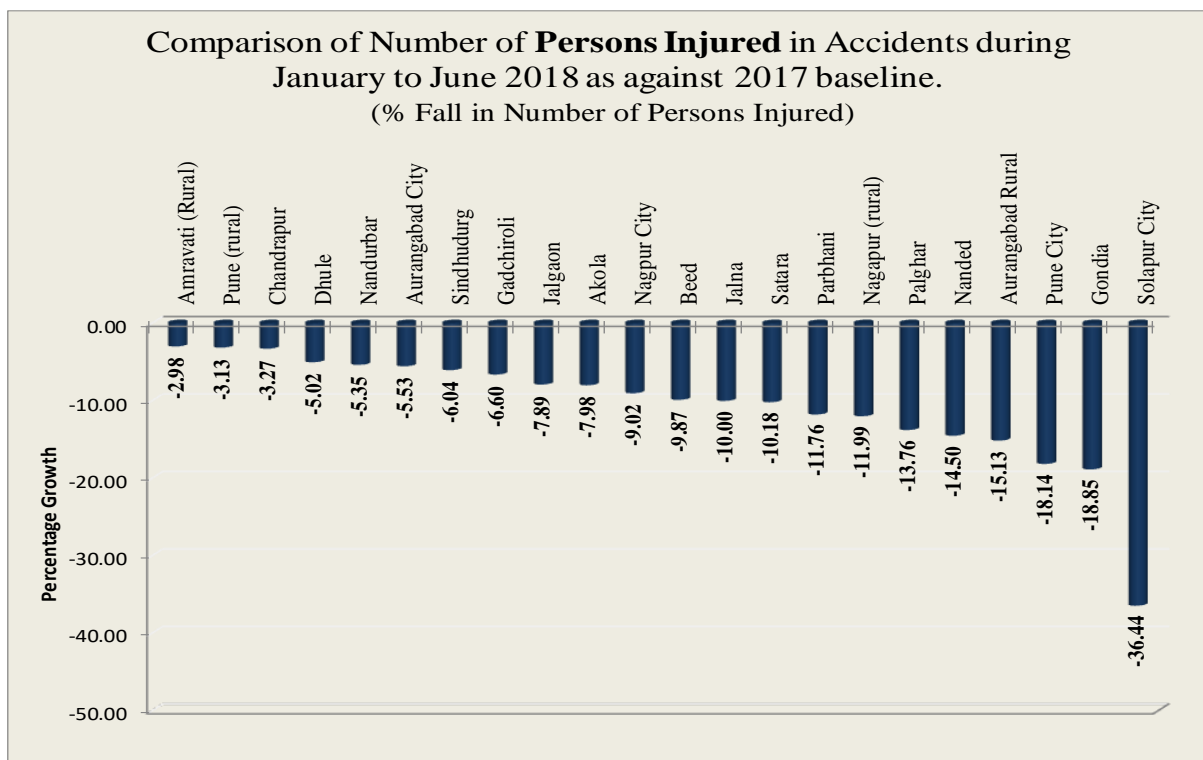
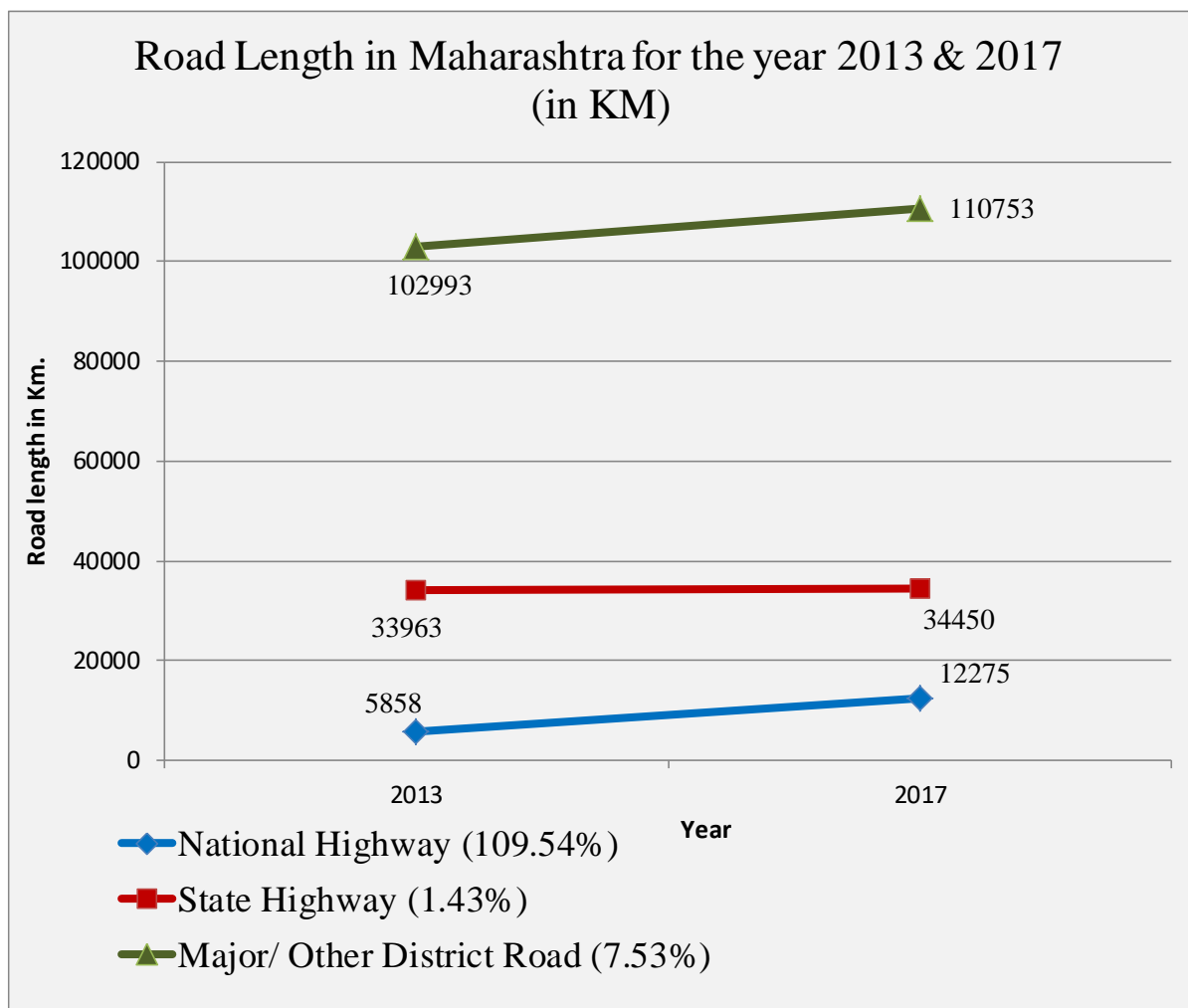


Chart B of Persons Injured in Accidents (-ve Growth, State 1.67% Growth)

Graphical representation of Accident Profile of Maharashtra State

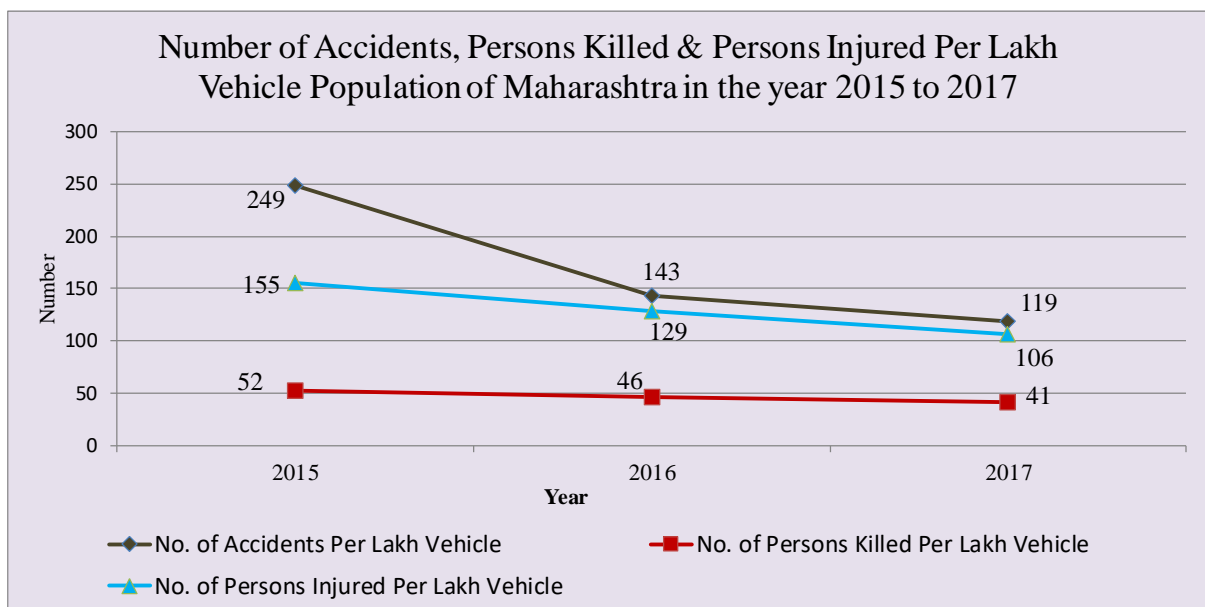
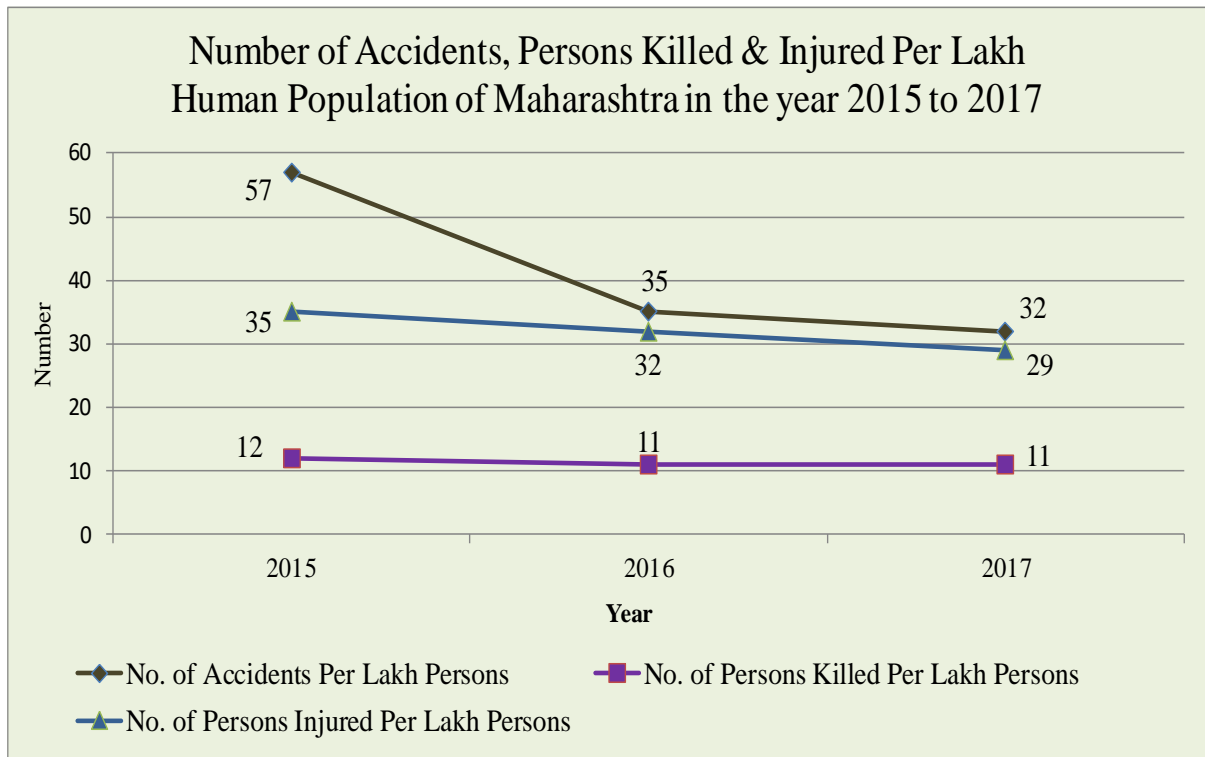
Road Length in Maharashtra for the year 2013 & 2017

Road	Year		% Growth
	2013	2017	
National Highway	5858	12275	109.54
State Highway	33963	34450	1.43
Major/ Other District Road	102993	110753	7.53



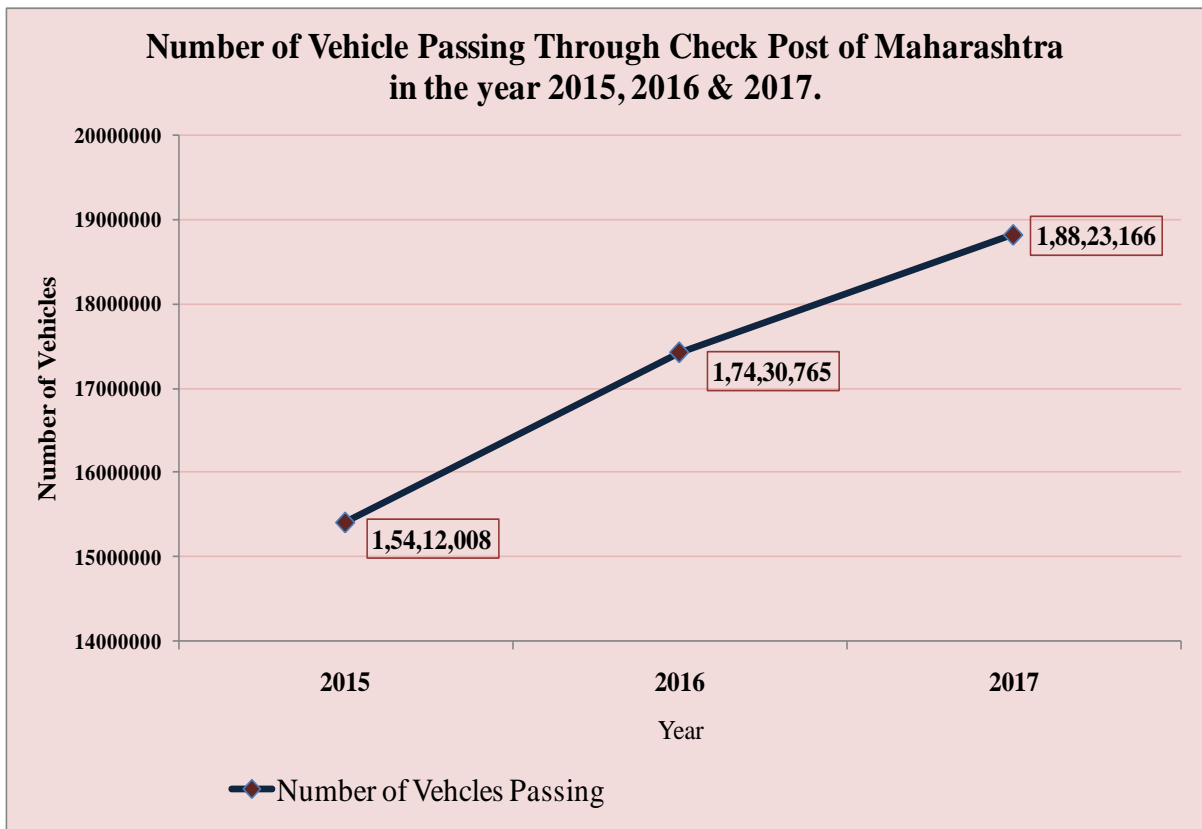
Source : Office of ADG (Highway)

Graphical representation of Accident Profile of Maharashtra State (2015 to 2017)



Source : Office of ADG (Highway)

Graphical representation of Accident Profile of Maharashtra State (2015 to 2017)



Source : Office of ADG (Highway)